

## Safe, controlled starts

When the safety control lever is moved upward, the console moves with it, providing more room for entry and exit. This also disables the pilot and travel controls, preventing unexpected machine movement during entry or exit.

## Straight travel

The U25S's Hydraulic Matching System ensures safer loading and off-loading by keeping the U25S traveling in a straight line while operating the boom.

## Swivel negative brake

Whenever the engine is stopped or the safety control lever is raised, the swivel negative brake automatically locks the house in its current position, thus eliminating the need for a swivel transport lock pin.

# U25S OPTIONS

● Buckets ● Spark arrest muffler ● Travel alarm

● Canopy lights

● Hydraulic thumb

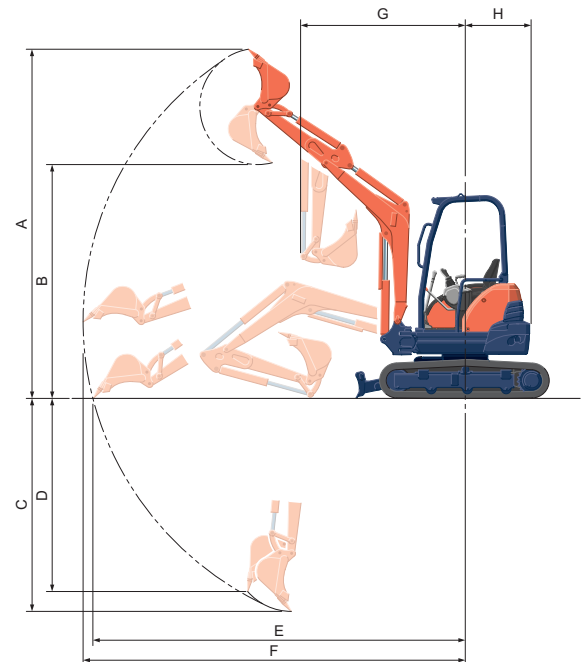
● Quick coupler

● Hydraulic hammer



## WORKING RANGE

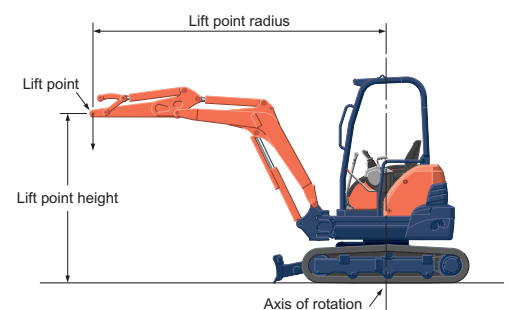
Model			U25S	
A	Max. digging height	ft. in. (mm)	14'10" (4530)	
B	Max. dumping height	ft. in. (mm)	10'6" (3210)	
C	Max. digging depth	ft. in. (mm)	9'3" (2810)	
D	Max. vertical digging depth	ft. in. (mm)	8'6" (2580)	
E	Max. digging radius at ground	ft. in. (mm)	15'4" (4670)	
F	Max. digging radius	ft. in. (mm)	15'8" (4770)	
G	Min. turning radius	W/o swing	ft. in. (mm)	6'3" (1900)
		With swing	ft. in. (mm)	4'8" (1420)
H	Min. tail turning radius	ft. in. (mm)	2'6" (760)	



## LIFTING CAPACITY

LIFT POINT HEIGHT (ft)	LIFTING CAPACITY OVER-FRONT BLADE DOWN unit=1000lbs				LIFTING CAPACITY OVER-SIDE unit=1000lbs		
	LIFT POINT RADIUS (ft)				LIFT POINT RADIUS (ft)		
	8	12	MAX	8	12	MAX	
6	1.23	1.12	1.05	1.23	0.96	0.72	
4	1.66	1.31	1.13	1.30	0.93	0.70	
2	2.05	1.49	1.21	1.24	0.90	0.69	
GL	2.22	1.59	1.24	1.21	0.88	0.68	

Machine with ROPS canopy and rubber crawler, without bucket

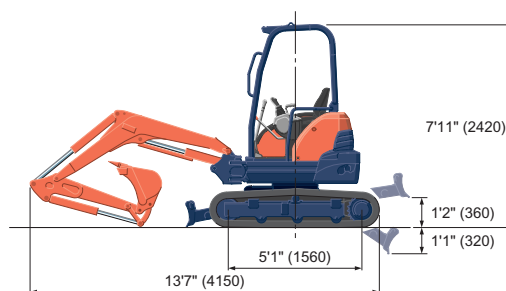
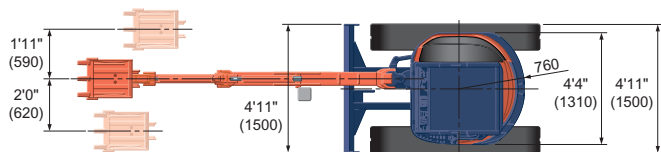


## SPECIFICATIONS

Model		U25S		
Type of ROPS / FOPS		Canopy		
Type of tracks		Rubber		
Engine	Model	Kubota D1105-E3		
	Output (SAEJ 1995 gross)	HP (kW)/rpm	20.9 (15.6) / 2400	
	Output (SAEJ 1349 net)	HP (kW)/rpm	19.8 (14.8) / 2400	
	Displacement	cu. in. (cc)	68.5 (1123)	
Dimensions	Overall length	ft. in. (mm)	13'7" (4150)	
	Overall height	ft. in. (mm)	7'11" (2420)	
	Overall width	ft. in. (mm)	4'11" (1500)	
	Min. ground clearance	in. (mm)	11.2" (285)	
Hydraulic system	Pump capacity	GPM (ℓ/min)	7.6 (28.8) Piston × 2 / 5.1 (19.2) Gear × 1	
	Auxiliary hydraulic flow	GPM (ℓ/min)	12.7 (48)	
	Max. breakout force	Bucket / Arm	lbs. (kgf)	4850 (2200) / 2745 (1245)
Drive system	Travel speed	mph (km/h)	1.6 (2.5) / 2.9 (4.5)	
	Max. drawbar pull	lbs. (kgf)	6745 (3060)	
	Tumbler distance	ft. in. (mm)	5'1" (1560)	
	Crawler length	ft. in. (mm)	6'7" (2000)	
	Shoe width	in. (mm)	11.8" (300)	
	Ground contact pressure	psi (kgf/cm <sup>2</sup> )	3.32 (0.23)	
Swing system	Unit swing speed	rpm	9.8	
	Boom swing angle	Left / Right	degree	75 / 55
Blade	Dimensions	Width	ft. in. (mm)	4'11" (1500)
		Height	in. (mm)	11.8" (300)
	Max. lift above ground	in. (mm)	1'2" (360)	
	Max. drop below ground	in. (mm)	1'1" (320)	
Hydraulic oil (reservoir / system)	gal (ℓ)	5.8 (22) / 9.8 (37)		
Fuel reservoir	gal (ℓ)	7.4 (28)		
Operating weight (Including operator's weight 175 lbs.)	lbs. (kgf)	5625 (2550)		

The company reserves the right to change the above specifications without notice. This brochure is for descriptive purposes only.  
Please contact your local Kubota dealer for warranty information.  
For your safety, Kubota strongly recommends the use of a Rollover Protective Structure (ROPS) and seat belt for almost all applications.

## DIMENSIONS



Unit: ft. in. (mm)

©2008 Kubota Corporation

# Kubota

**KUBOTA CANADA LTD.**

Head Office: 5900 14th Avenue, Markham, Ontario L3S 4K4 TEL: (905) 294-7477 FAX: (905) 294-6651  
Delta Distribution Centre: 7979 82nd Street, Delta, B.C. V4G 1L7 TEL: (604) 940-6061 FAX: (604) 940-6067  
Drummondville Distribution Office: 5705 Place Kubota, Drummondville, PQ, J2B 6V4 TEL: (819) 478-7151 FAX: (819) 478-7836

Visit our web site at: [www.kubota.ca](http://www.kubota.ca)

